

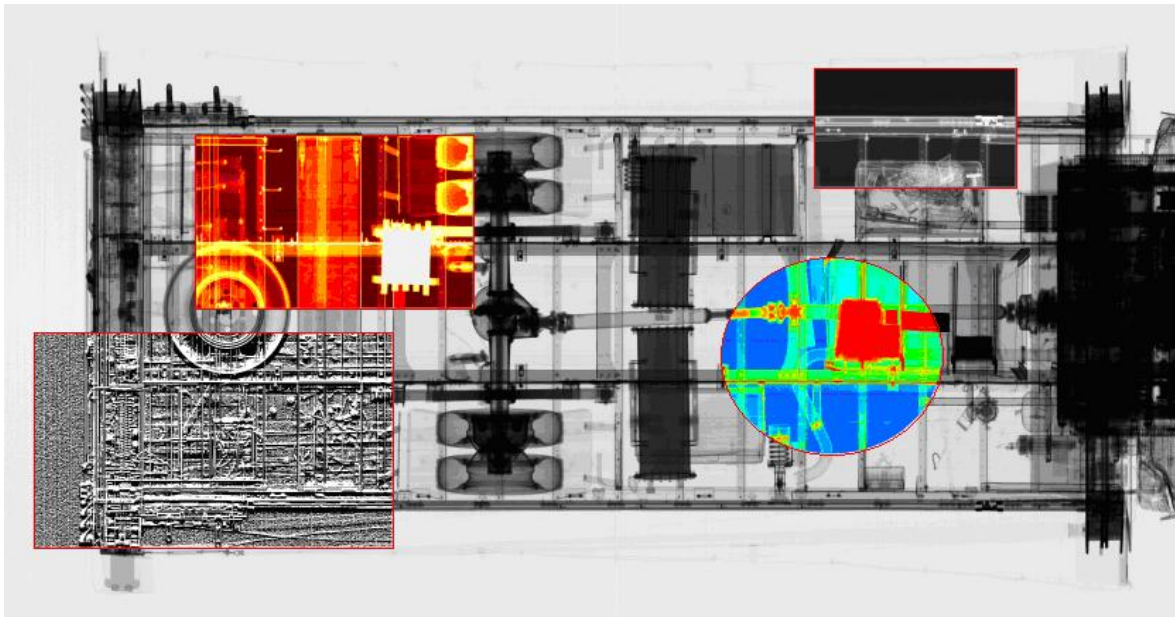
Cargo Inspection System

IsoSoft was contracted to develop a Windows based suite of software to allow border security resources to more effectively monitor and inspect land based and marine points of vehicle entry. The completed system has been deployed in North America, Asia and Europe. Below is a detailed description of one of the deployed systems.

This large x-ray based cargo inspection system required the ability for operators to quickly view multiple angles of incoming cargo containers and their associated manifests to prevent contraband and weapons of mass destruction from entering the borders of the target country.

In addition to standard image manipulation tools, the client required sophisticated image processing on regions of interest for further inspection and the ability to perform complex filtering and palette processing to facilitate threat detection in a high volume processing security station.

Security viewer operators would then pass/fail judgment on a cargo container as part of a larger workflow process based on the image viewing tools available in the software.



This viewer's features include:

- Image zooming and rotation.
- Image panning, scrolling and thumbnail display with all image processing as applied to the main image.
- Image palette manipulation to provide image invert, window width and level support, color palette substitution and density highlighting to callout features in a particular image.
- Image filters and custom filters written for the customer.
- Support for regions of interest that allowed us to perform independent image processing on full image or ROI basis.
- Support for multiple image file formats and bit depths.
- Image conversions from RAW format to standard image file formats.
- Foreign language support dialog boxes, menus and ROI objects.



Palette Dialog with Korean language support

Contact

IsoSoft Solutions
 carlm@isosoftsol.com
 847.679.0427 x105
 www.isosoftsol.com